

PHOENIX

Symbol of Virtue, Peace, and Harmony

March 2nd - May 6th, 2023

1



China

*Blade (Zhang) with Phoenix Openwork,
Shang Period*

1600 - 1100 BCE

Jade with Turquoise Inlay

H: 19 5/16 in. W: 4 1/4 in. Th: 1/8 in.

(Inv# 46641)

2



China

*Eagle Pendant, Late Neolithic Period,
Hongshan Culture*

4700-2500 BCE

Jade

H: 1 5/8 in. W: 2 7/8 in. Th: 1/2 in.

(Inv# 77843)

3



China

*Eagle Pendant, Late Neolithic Period,
Hongshan Culture*

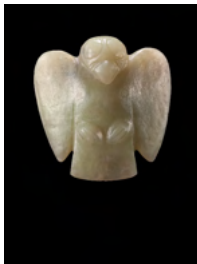
4700 - 2500 BCE

Jade

H: 3 1/4 in. W: 2 in. Th: 1 in.

(Inv# 83916)

4



China

*Horned Owl, Late Neolithic Period, Hongshan
Culture*

4700-2500 BCE

Jade

H: 3 in. W: 2 3/4 in. Th: 1 in.

(Inv# 86703)

5



China

Blade (Zhang) Engraved with Twin Phoenix, Western Zhou Period

1066 - 771 BCE

Jade

H: 18 1/2 in. W: 12 in. Th: 1/4 in.

(Inv# 74624)

6



China

Blade (Zhang) Engraved with Twin Phoenix, Shang Period

1600 - 1100 BCE

Jade

H: 33 in. W: 10 1/2 in. Th: 1/8 in.

(Inv# 56907)

7



China

Engraved Phoenix Blade, Western Zhou Period

1066 - 771 BCE

Jade

H: 23 1/4 in. W: 12 1/2 in. Th: 1/8 in.

(Inv# 77490)

8



China

Engraved Phoenix Blade with Fish Silhouette, Western Zhou Period

1066 - 771 BCE

Jade

H: 31 3/4 in. W: 7 1/2 in. Th: 1/4 in.

(Inv# 86701)

9



China

Engraved Blade with Beast and Phoenix, Shang Period

1600 - 1100 BCE

Jade

H: 20 1/2 in. W: 10 in. Th: 1/8 in.

(Inv# 80465)

10



China

Engraved Phoenix Blade, Western Zhou Period

1066 - 771 BCE

Jade

H: 30 in. W: 6 3/4 in. Th: 1/8 in.

(Inv# 86697)

11



China

Phoenix Blade, Shang Period

1600 - 1100 BCE

Jade

H: 16 1/8 in. W: 4 in. Th: 1/8 in.

(Inv# 81900)

12



China

Axe (Yue) with Phoenix Silhouette, Shang / Western Zhou Period

1600-771 BCE

Jade

H: 10 1/4 in. W: 8 3/8 in. Th: 1/16 in.

(Inv# 46867)

13



China

Axe (Yue) with Phoenix Silhouette, Shang/Western Zhou Period

1600-771 BCE

Jade

H: 12 1/4 in. W: 7 1/16 in. Th: 1/8 in.

(Inv# 46861)

14



China

Double Phoenix Blade (Zhang), Late Neolithic Period, Hongshan Culture

4700-2500 BCE

Jade

H: 12 3/4 in. W: 4 5/8 in. Th: 1/4 in.

(Inv# 43780)

15



China

Blade with Bird Relief, Late Neolithic Period, Qijia Culture

2100 - 1600 BCE

Jade

H: 6 5/8 in. W: 2 1/4 in. Th: 3/16 in.

(Inv# 86711)

16



China

Bird-shaped Axe, Late Neolithic Period, Qijia Culture

2100-1600 BCE

Jade

H: 7 in. W: 4 1/4 in. Th: 1/8 in.

(Inv# 82098-ST)

17



China

Eagle, Warring States Period

476 - 221 BCE

Jade

H:

(Inv# 42055)

18



China

Eagle with Animal Mask Engraving, Late Neolithic Period, Liangzhu Culture

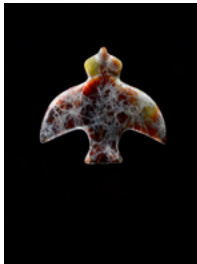
3200 - 2300 BCE

Jade

H: 1 7/8 in. W: 4 1/8 in. Th: 1/4 in.

(Inv# 82445)

19



China

Bird Pendant, Late Neolithic Period, Liangzhu Culture

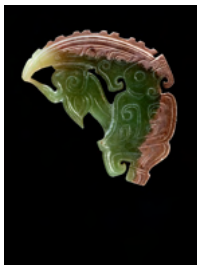
3200 - 2300 BCE

Jade

H: 1 7/8 in. W: 2 1/8 in. Th: 5/16 in.

(Inv# 82277)

20



China

Phoenix Pendant, Late Shang Period

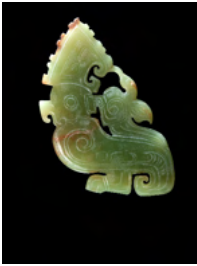
1600-1100 BCE

Jade

H: 2 in. W: 2 3/8 in. Th: 3/16 in.

(Inv# 85482)

21



China

Phoenix Pendant, Late Shang Period

1600-1100 BCE

Jade

H: 2 3/4 in. W: 2 1/8 in. Th: 3/16 in.

(Inv# 86173)

22



China

Phoenix Pendant, Late Shang Period

1600-1100 BCE

Jade

H: 3 1/2 in. W: 1 1/2 in. Th: 1/8 in.

(Inv# 86707)

23



China

Phoenix and Dragon Pendant, Late Shang/Western Zhou Period

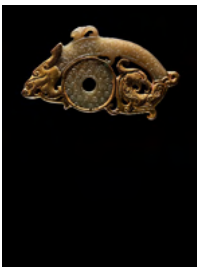
1600-771 BCE

Jade

H: 3 5/8 in. W: 2 in. Th: 1/8 in.

(Inv# 85285)

24



China

Dragon and Phoenix Pendant, Qing Dynasty

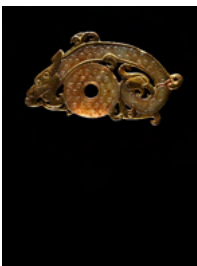
1644-1912 CE

Gilt jade

H: 1 7/8 in. W: 3 3/8 in. Th: 1/4 in.

(Inv# 83316)

25



China

Dragon and Phoenix Pendant, Qing Dynasty

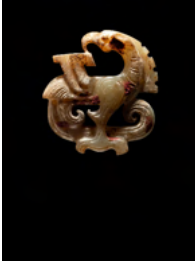
1644-1912 CE

Gilt jade

H: 1 7/8 in. W: 3 3/8 in. Th: 3/16 in.

(Inv# 83320)

26



China

Openwork Pendant of a Phoenix, Late Shang/Early Western Zhou Period

1600 - 771 BCE

Jade

H: 1 7/8 in. W: 1 7/8 in. Th: 5/8 in.

(Inv# 85279)

27



China

Bi Disc with Phoenix, Qing Dynasty

1644-1912 CE

Gilt jade

H: 4 3/4 in. W: 2 1/2 in. Th: 5/8 in.

(Inv# 74773)

28



China

Openwork Pendant of a Phoenix, Western Zhou Period

1066 - 771 BCE

Jade

H: 1 7/8 in. W: 1 3/4 in. Th: 5/8 in.

(Inv# 75374)

29



China

Dragon and Phoenix Pendant, Qing Dynasty

1644-1912 CE

Gilt Jade

H: 1 7/8 in. W: 3 1/4 in. Th: 1/4 in.

(Inv# 86172)

30



China

Dragon and Phoenix Pendant, Qing Dynasty

1644-1912 CE

Gilt Jade

H: 1 7/8 in. W: 3 1/2 in. Th: 1/4 in.

(Inv# 83331)

31



China

Phoenix Pendant, Qing Dynasty

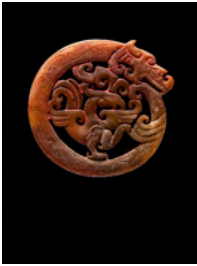
1644 - 1912 CE

Jade

H: 3 1/4 in. W: 2 5/8 in. Th: 3/4 in.

(Inv# 84983)

32



China

Dragon Pendant, Warring States Period

475-221 BCE

Jade

Dia: 3 1/4 in. Th: 1/8 in.

(Inv# 81549)

33



China

Phoenix Openwork Disc, Warring States Period

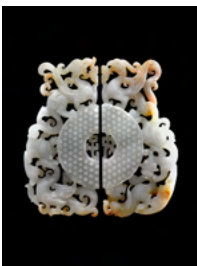
475-221 BCE

Jade

Dia: 3 1/8 in. Th: 3/16 in.

(Inv# 81425)

34



China

Dragon and Phoenix Openwork Pendant, Qing Dynasty

1644-1912 CE

Jade

H: 3 7/8 in. W: 1 7/8 in. Th: 1/8 in.

(Inv# 81975)

35



China

Dragon and Phoenix Pendant, Qing Dynasty

1644-1912 CE

Gilt Jade

H: 3 3/8 in. W: 2 in. Th: 1/4 in.

(Inv# 83322)

36



China

Dragon and Phoenix Pendant, Qing Dynasty

1644-1912 CE

Gilt jade

H: 3 1/8 in. W: 1 3/4 in. Th: 1/4 in.

(Inv# 83325)

37



China

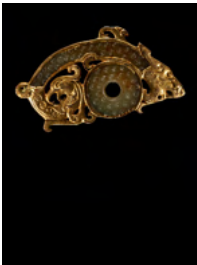
Dragon and Phoenix Pendant, Qing Dynasty
1644-1912 CE

Gilt jade

H: 2 in. W: 2 7/8 in. Th: 1/4 in.

(Inv# 83329)

38



China

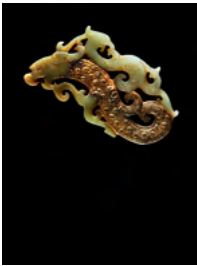
Dragon and Phoenix Pendant, Qing Dynasty
1644-1912 CE

Gilt Jade

H: 1 7/8 in. W: 3 3/8 in. Th: 1/4 in.

(Inv# 83321)

39



China

Dragon and Phoenix Pendant, Qing Dynasty
1644-1912 CE

Gilt jade

H: 1 3/4 in. W: 3 1/4 in. Th: 1/4 in.

(Inv# 83310)

40



China

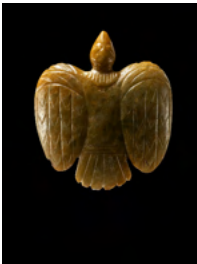
Dragon and Phoenix Pendant, Qing Dynasty
1644-1912 CE

Gilt jade

H: 3 3/8 in. W: 1 7/8 in. Th: 1/4 in.

(Inv# 83311)

41



China

*Eagle Pendant, Late Neolithic Period,
Hongshan Culture*

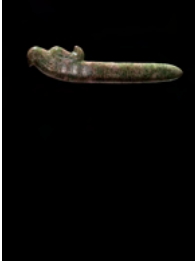
4700-2500 BCE

Jade

H: 3 3/4 in. W: 3 1/4 in. Th: 5/8 in.

(Inv# 85560)

42



China

*Phoenix Finial, Late Neolithic Period,
Hongshan Culture*

4700 - 2500 BCE

Jade

H: 1 1/2 in. W: 7 in. Th: 3/8 in.

(Inv# 85193)

43



China

Bird, Late Neolithic Period, Hongshan Culture

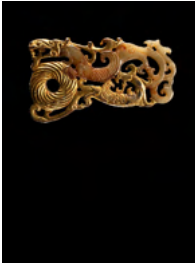
4700 - 2500 BCE

Jade

H: 4 1/8 in. W: 3 3/4 in. Th: 3/4 in.

(Inv# 86712)

44



China

Dragon and Phoenix Pendant, Qing Dynasty

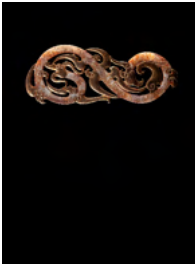
1644-1912 CE

Gilt Jade

H: 1 7/8 in. W: 3 3/8 in. Th: 1/4 in.

(Inv# 83323)

45



China

Dragon and Phoenix Pendant, Qing Dynasty

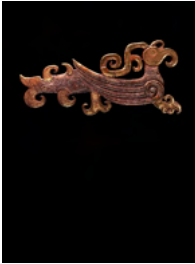
1644-1912 CE

Gilt jade

H: 2 in. W: 5 1/4 in. Th: 3/16 in.

(Inv# 75463)

46



China

Phoenix Pendant, Qing Dynasty

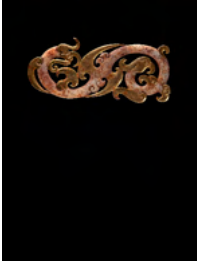
1644 - 1912 CE

Gilt jade

H: 2 1/4 in. W: 5 in. Th: 1/4 in.

(Inv# 74742)

47



China

Dragon and Phoenix Pendant, Qing Dynasty
1644-1912 CE

Gilt Jade

H: 2 in. W: 5 in. Th: 3/16 in.

(Inv# 75462)

48



China

Phoenix Openwork Plaque, Qing Period
1644-1912 CE

Gilt Jade

H: 2 1/2 in. W: 3 1/2 in. Th: 1/4 in.

(Inv# 74754)

49



China

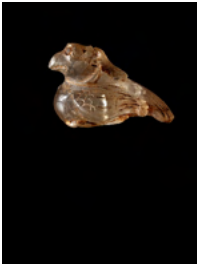
Crane, Qing Dynasty
1644-1912 CE

Jade

H: 2 in. W: 3 in. Th: 1 7/8 in.

(Inv# 70359)

50



China

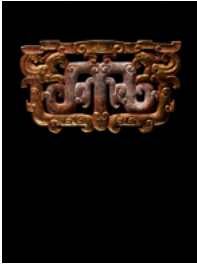
Phoenix, Qing Dynasty
1644 - 1912 CE

Rock crystal

H: 1 1/2 in. W: 1 3/4 in. Th: 2 3/8 in.

(Inv# 46009)

51



China

Dragon and Phoenix Pendant, Qing Dynasty
1644-1912 CE

Gilt jade

H: 2 1/4 in. W: 4 1/4 in. Th: 1/4 in.

(Inv# 78543)

52



China

Hair Piece with Phoenix Openwork, Warring States Period

475 - 221 BCE

Jade

H: 1 5/8 in. W: 4 1/4 in. Th: 1/8 in.

(Inv# 69680)

53



China

Pendant with Phoenix and Dragon, Warring States Period

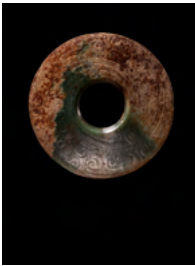
475 - 221 BCE

Jade

H: 2 in. W: 3 1/2 in. Th: 1/8 in.

(Inv# 76048)

54



China

Bi Disc with Phoenix Engraving, Western Zhou Period

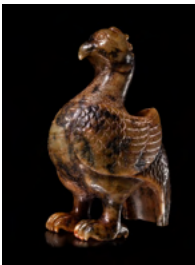
1066 - 771 BCE

Jade

Dia: 6 in. Th: 1/4 in.

(Inv# 44920)

55



China

Eagle, Ming Dynasty

1368-1644 CE

Jade

H: 7 1/4 in. W: 3 in. D: 4 3/4 in.

(Inv# 45753)

56



China

Bi Disc with Phoenix Engraving and Incised Scroll Pattern, Han Dynasty

206 BCE - 220 CE

Jade

Dia: 9 1/2 in. Th: 3/16 in.

(Inv# 76646)

57



China

Phoenix Pendant, Han Period

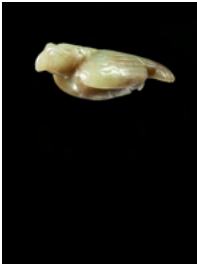
206 BCE - 220 CE

Jade

H: 1 in. W: 2 1/8 in. Th: 3 1/8 in.

(Inv# 83399)

58



China

Rose Finch Pendant, Han Period

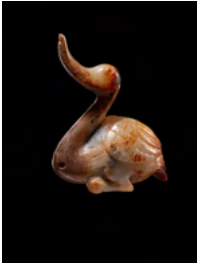
206 BCE - 220 CE

Jade

H: 1 1/8 in. W: 1 3/4 in. Th: 1 in.

(Inv# 84191)

59



China

Duck, Yuan/Ming Dynasty

1271 - 1644 CE

Jade

H: 2 1/4 in. W: 2 in. Th: 1 1/8 in.

(Inv# 86178)

60



China

Phoenix Pendant, Late Neolithic Period,

Hongshan Culture

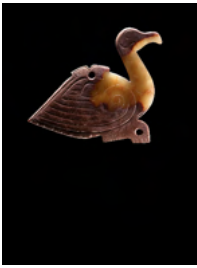
4700 - 2500 BCE

Jade

H: 4 in. W: 6 7/8 in. Th: 1/4 in.

(Inv# 84580)

61



China

Goose Pendant, Shang Period

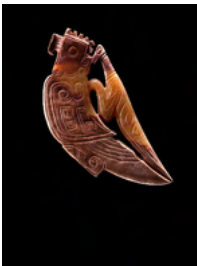
1600 - 1100 BCE

Jade

H: 2 1/2 in. W: 3 1/4 in. Th: 3/16 in.

(Inv# 85159)

62



China

Phoenix and Praying Mantis Pendant,

Shang/Western Zhou Period

1066 - 771 BCE

Jade

H: 1 7/8 in. W: 3 1/2 in. Th: 1/4 in.

(Inv# 85291)

63



China

Goose, Late Shang Period

1600-1027 BCE

Jade

H: 1 7/8 in. W: 2 1/2 in. Th: 1/8 in.

(Inv# 86071)

64



China

Plaque with Two Cranes, Qing Dynasty

1644 - 1912 CE

Jade

H: 4 1/4 in. W: 3 in. Th: 1/2 in.

(Inv# 82123)

65



China

Pendant with Crane Engraving, Ming Period

1368-1644 CE

Jade

H: 2 1/4 in. W: 2 3/8 in. Th: 5/8 in.

(Inv# 65904)

66



China

Swan and Lotus Pendant, Yuan Dynasty

1279 - 1368 CE

Jade

Dia: 2 1/4 in. Th: 1/4 in.

(Inv# 69213)

67



China

Cloud-Shaped Phoenix Pendant, Late

Neolithic Period, Hongshan Culture

4700-2500 BCE

Jade

H: 3 7/8 in. W: 10 1/8 in. Th: 1/8 in.

(Inv# 86181)

69



China

*Eagle Pendant, Late Neolithic Period,
Hongshan Culture*

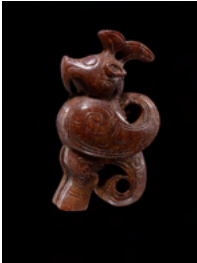
4700 - 2500 BCE

Jade

H: 2 1/4 in. W: 2 1/5 in. Th: 1/4 in.

(Inv# 86306)

70



China

Owl Pendant, Late Shang Period

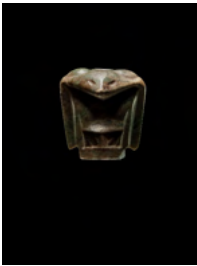
1600 - 1100 BCE

Jade

H: 2 3/4 in. W: 1 in. D: 1 3/4 in.

(Inv# 86710)

71



China

*Horned Owl Pendant, Late Neolithic Period,
Hongshan Culture*

4700 - 2500 BCE

Jade

H: 1 3/8 in. W: 1 1/4 in. Th: 3/4 in.

(Inv# 40227)

72



China

Bird Pendant, Shang Period

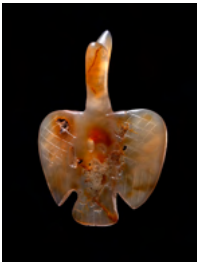
1600 - 1100 BCE

Jade

H: 2 7/8 in. W: 1 7/8 in. Th: 1/4 in.

(Inv# 84964)

73



China

Goose Pendant, Song Dynasty

960 - 1279 CE

Agate

H: 3 1/16 in. W: 2 1/8 in. Th: 5/8 in.

(Inv# 84666)

74



China

*Bi Disc with Phoenix Engraving and Incised
Scroll Pattern, Warring States Period*

475 - 221 BCE

Jade

Dia: 9 3/8 in. Th: 3/16

(Inv# 84157)

75



China

*Hooked Cloud and Bird Pendant, Late
Neolithic Period, Hongshan Culture*

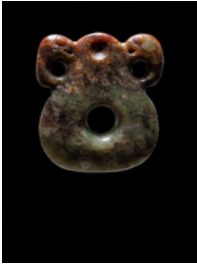
4700 - 2500 BCE

Jade

H: 2 1/4 in. W: 4 3/4 in. Th: 1/8 in.

(Inv# 75671-C)

76



China

*Two Phoenix Pendant, Late Neolithic Period,
Hongshan Culture*

4700 - 2500 BCE

Jade

H: 3 1/8 in. W: 3 in. Th: 3/8 in.

(Inv# 79726)

77



China

*Bi Disc with Phoenix Engraving and Incised
Scroll Pattern, Han Period*

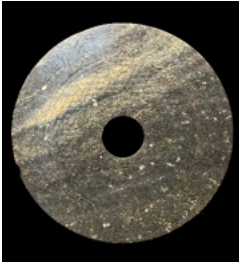
206 BCE - 220 CE

Jade

Dia: 12 5/16 in. Th: 1/4 in.

(Inv# 81896)

78



China

*Bi Disc with Phoenix Engraving and Incised
Scroll Pattern, Han Period*

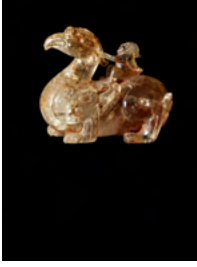
ca. 206 BCE - 220 CE

Jade

Dia: 12 1/4 in. Th: 3/16 in.

(Inv# 82661)

79



China

Phoenix and Rider, Qing Dynasty

1644 - 1912 CE

Rock crystal

H: 5 1/4 in. W: 2 7/8 in. Th: 6 1/4 in.

(Inv# 46006)

80



China

Pair of Human Figures with Phoenix Headdress, Western Zhou Period

1066 - 771 BCE

Jade

H: 4 3/8 in. W: 7/8 in. Th: 1/4 in.

(Inv# 47307)

81



China

Pair of Phoenix Plaques, Western Zhou Period

1066 - 771 BCE

Jade

H: 6 3/16 in. W: 2 3/16 in. Th: 3/16 in.

(Inv# 47082)

82



China

Engraved Phoenix Plaque, Western Zhou Period

1066 - 771 BCE

Jade

H: 5 1/2 in. W: 1 1/2 in. Th: 1/8 in.

(Inv# 47402)

83



China

Pendant with Anthropomorphic Kneeling Figure and Phoenix, Western Zhou Period

1066 - 771 BCE

Jade

H: 5 1/8 in. W: 2 1/8 in. Th: 3/8 in.

(Inv# 86189)

84



China

Pair of Pigs, Han Period

206 BCE - 220 CE

Ceramic

H: 9 5/8 in. W: 17 5/8 in. / H: 9 3/16 in.

W: 18 3/16 in.

(Inv# 83550)

85



China

Pig, Han Dynasty

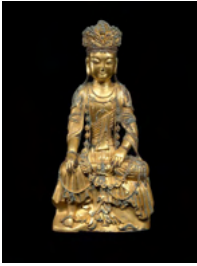
206 BCE - 220 CE

Ceramic

H: 9 3/16 in. W: 18 3/16 in.

(Inv# 83554)

86



China

Seated Bodhisattva, Tang Dynasty

618-907 CE

Bronze

H: 12 1/4 in.

(Inv# 69302)

87



China

Seated Buddha, Northern Qi Dynasty

550-577 CE

Marble with polychrome

H: 9 3/4 in.

(Inv# 86147)

88



China

Bi, Late Neolithic Period, Liangzhu Culture

3200-2300 BCE

Jade

Dia: 16 3/4 in. (thickness 1/2 in.)

(Inv# 48167)

89



China

Bi, Late Neolithic Period, Liangzhu Culture

3200-2300 BCE

Jade

Diameter: 19 1/4 in. (approx.)

(Inv# 48435)

90



Zheng Xie
Qing Dynasy (1693-1766)

Bamboo, Qing Dynasty

1636-1912

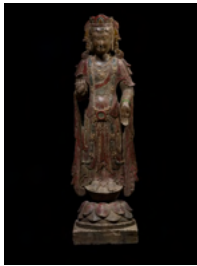
Ink on paper

Image Size: 51 in. x 25 in. (79 in. x 31 in.)

Artist Stamp on Recto

(Inv# 86744)

91



China

Standing Bodhisattva, Northern Qi Dynasty

550-577 CE

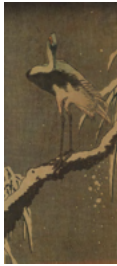
Limestone with polychrome

H: 47 1/2 in.

Transcendence Cat.36

(Inv# 79003)

92



Nishinomiya & Hasegawa

Untitled (Crane on a snow covered branch)

1900

Watercolor on rice paper hinged on board

11 1/4 x 4 1/4 in.

Signed and Stamped on recto and verso

(Inv# 65761)

93



Attributed to Kimbei Kusakabe

Three Maidens in the park

1890-1900

Hand-colored Bromide Print

17 x 13 1/2 in.

n.s

(Inv# 79869)



China

Phoenix Pendant, Qing Dynasty

1644-1912 CE

Jade

H: 2 5/8 in. W: 2 7/8 in. Th: 3/16 in.

(Inv# 80962)